

Specifications

備注 (Remark)

1. 材料 (Material)

膠芯: PA9T/LCP+30%G.F UL94V-0, 顏色: 黑色

Housing: PA9T/LCP+30%G.F UL94V-0, Color: Black

端子: 黃銅

Contact: Brass

2. 特性 (characteristics):

額定電流: 7.0AMP

Rating Current: 7.0AMP

接觸阻抗: 20mΩ Max

Contact Resistance: 20mΩ Max

絕緣阻抗: 1000MΩ Min

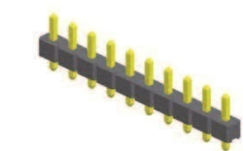
Insulating Resistance: 1000 MΩ Min

耐電壓: AC 500V/分钟

Withstanding Voltage: AC 500V/Minute

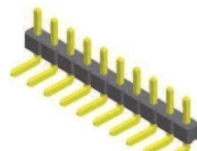
溫度範圍: -40° C to +105° C

Temperature Range: -40° C to +105° C



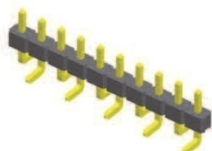
PH508-12PXXXXXXX1

$$L=A+B*3.0$$



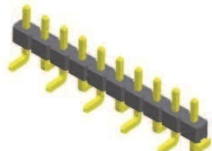
PH508-12RXXXXXXX1

$$L=A+B+D+5.65$$



PH508-12SXXXXXXX1

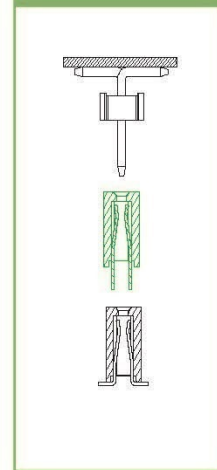
$$L=B+D+3.0+W/2$$



PH508-12SXXXXXXX2

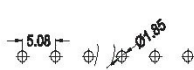
$$L=B+D+3.0+W/2$$

Mating With/配對母座:

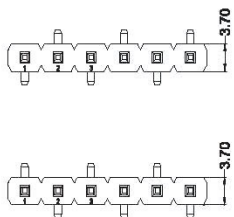
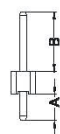
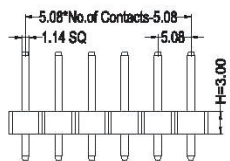


Dimension antitheses list

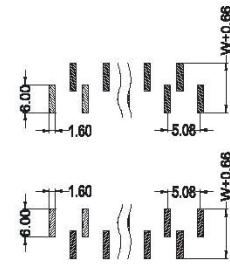
ITEM	A	B
Standard	3.50	8.00
Alternate		



Recommended P.C.B Layout

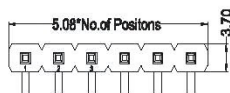


TYPE 1

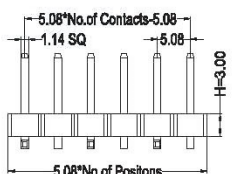
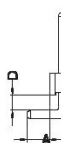
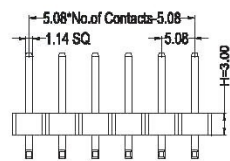


TYPE 2

Recommended P.C.B Layout



Recommended P.C.B Layout



TYPE 1



TYPE 2

Recommended P.C.B Layout

Dimension antitheses list

ITEM	A	B	D
Standard	3.50	8.00	2.00
Alternate			

Dimension antitheses list

ITEM	B	D	W
Standard	8.00	0.45	10.0
Alternate			

PH508-12

X

XX

XX

XXX

X

X

Contact Shape:
P: Straight
R: Right Angle
S: SMT

No. Of Pins Per Row
02~20P

Contact Plating
Full Of Gold
G0=0.8u"
~
G9=30u"
S1=Ordinary Tin Plated
S2=Matte Tin Plated
S3=Tin-plated High-temperature

Length Of Terminal

Packing
A: PE Bag
R: Tape & Reel
T: Tube
D: Tube+CAP
E: Tray

Journal Number
1: Type1 (without Post)
2: Type2 (with Post)